



exhibitor &
sponsorship
PROSPECTUS

2 0 2 4

ANNUAL CONVENTION
APRIL 11-13



**NATIONAL BLACK ASSOCIATION FOR
SPEECH-LANGUAGE AND HEARING**

CONVENTION 2024

SHERATON RALEIGH HOTEL

CONTENTS

JOIN US	5
ATTENDEE DEMOGRAPHICS	6
PAST EXHIBITORS AND SPONSORS	7
HOTEL INFORMATION	8
BECOME AN EXHIBITOR TODAY!	9
SPONSORSHIP OPPORTUNITIES	11
SPONSORSHIP DESCRIPTIONS	12
ADVERTISEMENTS	14
SUMMARY OF SPONSORSHIP OPPORTUNITIES	16
PROGRAM BOOKLET ADVERTISING	17
SCHOLARSHIPS	18



JOIN US

JOIN NBASLH April 11-13, 2024, in Raleigh, North Carolina to connect your organization to speech-language pathology and audiology leaders, decision-makers, practitioners, and students. NBASLH was established in 1978 as the premier professional and scientific association addressing the communication interests and concerns of black communications sciences and disorders professionals, students, and consumers. The association is the model for other organizations addressing the concerns of diverse populations.

Exhibiting at NBASLH's Convention offers you the opportunity to become a vital part of the largest annual professional educational gathering for African-American audiologists, speech-language pathologists, speech, language, and hearing scientists, researchers, academicians, administrators, students, and affiliates from culturally diverse and linguistic backgrounds across the country and the Caribbean.

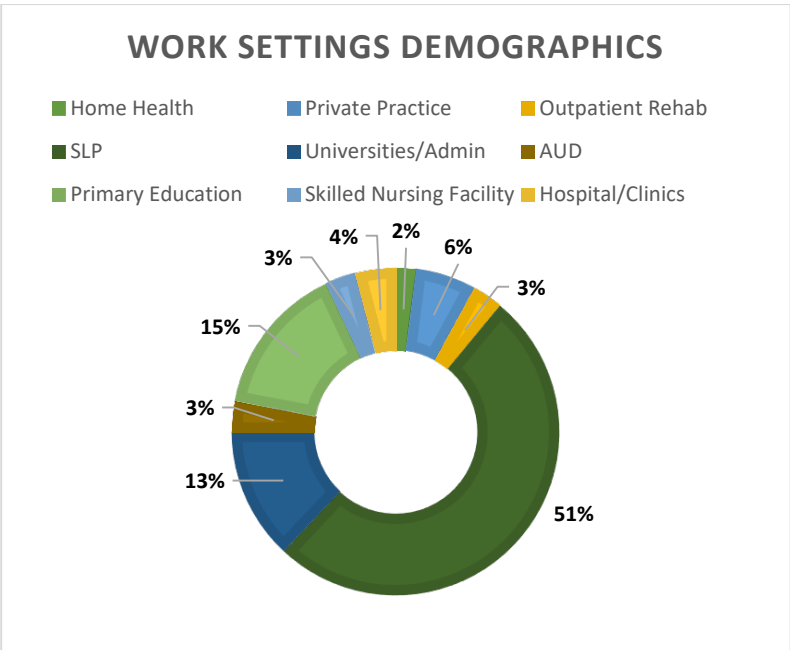
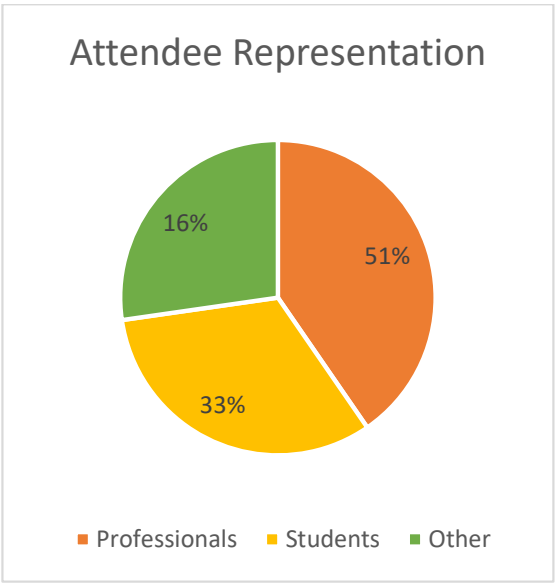
In just three days, your company has the ability to reach **500 speech, language, and hearing professionals**—all of whom are focused on learning and looking for revolutionary products, services, resources, and tools to advance their work and careers.

Dozens of businesses and organizations have recognized that NBASLH Convention is the place to grow their business and capture the attention of new customers, as well as the place to strengthen their relationships with current customers. There is no better opportunity for face-to-face time with professionals who select, recommend, and approve purchases.

THE CONVENTION EXHIBIT AREA IS THE HEART OF KNOWLEDGE, INNOVATION AND NETWORKING AT THE NBASLH CONVENTION. It is where attendees experience and purchase products and services, where students connect with potential professors, where professionals discover new job opportunities, and where exhibitors have direct access to decision-makers, job seekers, and seasoned professionals.

We invite your business or organization to get your products or services in front of NBASLH Convention attendees by participating in the NBASLH Exhibit Area. We offer excellent exhibition hours and an exhibitor listing prior to and during the convention. Exhibitors also receive complimentary advertising in our convention materials.

ATTENDEE DEMOGRAPHICS



PAST EXHIBITORS AND SPONSORS

American Speech-Language-Hearing Association
ASHA Certification
Aspire Products, LLC
Atrium Health
Baltimore City Public Schools
Baylor University - Communication Sciences and Disorders
Bright Ideas Media
CapTel from T-Mobile
Cathys Designs
Children's Evaluation & Therapy Center
Cincinnati Children's Hospital
Clanton Communications, LLC
Cobb Pediatric Therapy Services
Coffee & Communication
Coffeehouse SLP
Communication Joy! LLC
Cross Country Education
District of Columbia Public Schools
Dynamic Therapy
EPICC Technologies
Eyegaze.com
Francis Marion University
From Head to Toe
Global Speech and Rehab Services
Hampton University
Howard University, Department of Communication Science and Disorders,
Inova Health System
Invo Healthcare - Progressus Therapy
Jackson Therapy Partners
Kenechi Fashion
Kennedy Krieger Institute
KidsCare Home Health
Kindred Healthcare
Let's Talk Therapy
Long Island University, Brooklyn Campus
Los Angeles Unified School District
LSVT Global
Meaningful Intervention Services
Mediscan Staffing Services
Montgomery County Public Schools
National Recruiting Consultants, LLC
Oklahoma State University, Department of Communication Disorders and Sciences

Orange County Public Schools
Pearson Clinical Assessments
Pediatric & Adult Therapy Services, LLC
Plural Publishing
Presence
Purdue University
Real Food Blends
RehabCare / Kindred Hospital Rehabilitation Services
Right Stuff Health Systems
Roundtree Group, LLC
Secur
Smarty Ears
Smiles for Speech, Inc
Sonova Audiological Care
SpeechTherapyPD.com
Stuttering Foundation
Super Duper Publications
Syracuse University - Communication, Sciences and Disorders
TalkTools®
Texas State University - Department of Communication Disorders -
The Columbus Organization
The Learning Loft, LLC
The MedSLP Collective
The Parish School
The SLP Business Suite
The Stepping Stones Group
The Village Boutique
TherapyEd
T-Mobile IP Relay
Tobii Dynavox
University of Houston - Department of Communication Sciences & Disorders
University of Kentucky
University of Louisiana-Lafayette
University of North Carolina at Chapel Hill
University of St. Augustine for Health Sciences
University of Texas Rio Grande Valley COMD Dept
University of the District of Columbia Speech and Language Program
Ventriss Learning
World Financial Group

HOTEL INFORMATION

LOCATION INFORMATION

Sheraton Raleigh Hotel

421 S Salisbury St
Raleigh, NC 27601

A special room rate of \$189 per night is available until March 19, 2024, or **until the room block is sold out, whichever occurs first**. To receive the special room rate, please ask that your reservation is booked within the room block. To make reservations, call 800-325-3535 or visit <https://www.nbaslh.org/2024-registration-and-hotel-info> .

EXHIBIT SCHEDULE

Wednesday, April 10, 2024

12:00 pm - 5:00 pm: Exhibitor Setup

Thursday, April 11, 2024

9:00 am - 4:30 pm: Exhibits Open

12:30 pm - 1:30 pm: Closed for Lunch

Friday, April 12, 2024

8:00 am - 4:00 pm: Exhibits Open

12:00 pm - 1:30 pm: Closed for Lunch

Saturday, April 13, 2024

8:00 am - 4:00 pm: Exhibits Open

4:00 pm - 5:30 pm: Exhibitor Dismantling

BECOME AN EXHIBITOR TODAY!



EXHIBIT TABLES SOLD OUT

Attract new professionals or check in with familiar ones. Engage with the 2024 NBASLH Convention attendees and tell them directly about the value of your products and/or organization.

Exhibitor Registration Information:

Register on the NBASLH website (link to: <https://nbaslh.memberclicks.net/nbaslh24exhibit>) by clicking on the Convention menu and select Exhibitor Registration.

Exhibitor Rates:

Booth Type	Standard Rate
Nonprofit / Educational	\$875
Company	\$1,000
Strategy Package	\$1,500



All Exhibit Booths Include:

- One (1) full registration (does not include an awards gala ticket)
- One (1) exhibit staff-only badge (access to exhibit area only)
- Listing in the convention program
- Listing on NBASLH website exhibitor page
- One (1) skirted table, two (2) chairs, and one (1) table identification sign

All Strategy Package Booths ALSO Include:

- Your choice of a prime location in the exhibit area
- Half-page advertisement on the convention on-site program

Additional Information:

Additional tables may be purchased for \$250 per table. An extra exhibitor badge may be purchased for \$225. The extra badge provides access to all events including the Awards gala but does not include CEUs.

Registered attendees may purchase "The NBASLH Experience" Gala tickets at \$25.

Guest gala tickets may be purchased for \$85 per ticket.

The costs for electricity and internet connections are billed separately through the Sheraton Raleigh Hotel.

The exhibit area is limited and assigned prior to the convention. Companies who have a non-profit status or similar must provide applicable IRS documentation with the exhibitor application.

Secure a sponsorship to level up your exhibitor benefits! See Sponsorship Opportunities - Page 11.

SPONSORSHIP OPPORTUNITIES

You are also invited to become an Official Sponsor of the 2024 NBASLH Convention. The NBASLH Convention features four levels of sponsorship: Advocate (\$4,000+), Partner (\$2,000 to \$3,000), Supporter (\$550-\$1,500), and Friend (\$500 or less). Sponsors receive up to seven (7) additional benefits over regular exhibitors. Your specific sponsorship adds even more benefits. See the next page for sponsorship descriptions.

You may combine sponsorships to level up your sponsor benefits!

Benefits	Advocate (\$4,000+)	Partner (\$2,000-\$3,999)	Supporter (\$501-\$1,999)	Friend (\$500 or Less)
Exhibitor Table Includes one skirted table, 2 chairs, and 1 table identification sign	✓	✓		
Advertising Includes a full color ad in the convention program	✓ (full page)	✓ (half page)		
Registration Includes one (1) full convention registration and (1) exhibit staff only badge	✓	✓		
"The NBASLH Experience" Awards Gala Tickets	✓ (Two tickets)	✓ (One ticket)		
Company Recognition Sponsor ribbon affixed to your company attendee's name badge for networking	✓	✓	✓	✓
Company or University logo on all convention related marketing email blasts in addition to event sponsorship signage, convention website, social media platforms and convention program	✓	✓	✓	✓
E-newsletter Recognition in NBASLH's Summer <i>Resound</i>)))	✓	✓	✓	✓

* Additional tickets for "The NBASLH Experience" Awards Gala may be purchased for \$85 per ticket.

SPONSORSHIP DESCRIPTIONS

Sponsor Registration Information:

Register on the NBASLH website (link to: <https://nbaslh.memberclicks.net/nbaslhsponsor>) by clicking on the Convention menu and select Sponsor

AWARDS GALA SPONSOR | PARTNER LEVEL | \$2,500 **(4 AVAILABLE) 2 REMAINING**

- Gain additional exposure with conference attendees and exhibitors at this year's Awards Gala being held at the Sheraton Raleigh Hotel. This is our most popular event with over 350 in attendance in 2023!
- Sponsorship includes the partner level benefits, exclusive identification as the gala sponsor, and two video commercials played during the awards gala.

STUDENT/MENTOR LUNCHEON SPONSOR | ADVOCATE LEVEL | **\$5,000 SOLD**

- Each year, the NBASLH convention holds a student mentor luncheon where students are afforded the opportunity to network with speech-language pathologists and audiologists while enjoying lunch, a presentation, and fun activities. This luncheon provides students the opportunity to not only socialize with their peers but make a connection with professionals on an intimate level.
- Sponsorship includes the advocate level benefits, a premiere location for your company/organization in the Exhibit Area and your logo featured on signage at the student/mentor luncheon.

OPENING SESSION SPONSOR | PARTNER LEVEL | \$2,500 **(2 AVAILABLE) SOLD**

- Premium exposure at one the largest attended event at the convention. The Opening Session is the official kick off of the convention a keynote speaker and an introduction to the organization's officers.
- Sponsorship includes the partner level benefits, your logo featured on signage at the event, your company will be verbally recognized, and VIP seating for two representatives.

**OPENING RECEPTION SPONSOR | PARTNER LEVEL | \$2,500
(4 AVAILABLE)**

- Kick off the opening reception with cocktails & hors d'oeuvres.
- Sponsorship includes the partner level benefits and your logo featured on signage at the event.

POSTER SESSION | PARTNER LEVEL | \$3,000

- Be the company to support discussions of innovative research and professional issues while attendees naturally engage with the poster presenters.
- Sponsorship includes the partner level benefits and your company logo featured on signage at the event.

**CLOSING RECEPTION SPONSOR | PARTNER LEVEL | \$2,000
(4 AVAILABLE)**

- End the convention with wine and hors d'oeuvres during the highlighted poster session.
- Sponsorship includes the partner level benefits, company logo displayed on all beverage napkins (Company provides napkins) and featured on signage at the event.

**BREAK REFRESHMENTS SPONSOR | ADVOCATE LEVEL | \$4,000
(3 AVAILABLE)**

- Refreshment breaks provide a great opportunity for attendees to network and socialize in a relaxed environment. Host the continental breakfast or snack break in the exhibit area for convention attendees. Energize attendees between sessions with a quick pick-me-up and we will provide you with signage at each coffee service station and your logo in the Convention On-Site Program. Sponsorship of one of the refreshment breaks allows you to put your name and brand in full view of convention attendees. One sponsorship is available per day of the convention. Sponsors will choose their preferred day.
- Sponsorship includes the advocate level benefits and company logo displayed on all beverage napkins (Company provides napkins).

DANCING AND DESSERTS SPONSOR | PARTNER LEVEL | \$2,500

- Following the Awards Gala, convention attendees will enjoy music, fun, and desserts.
- Sponsorship includes the partner level benefits and your company logo featured on signage near the dessert station.

ADVERTISEMENTS

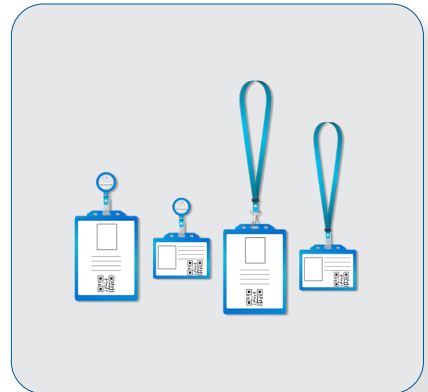
CONFERENCE BAGS | PARTNER LEVEL | \$2,000 | (2 AVAILABLE) 1 REMAINING

- Be the company that is in the hands of every attendee by providing the carrying totes. The bags should be strong enough to hold up to five pounds and made of a material other than paper. This is a first-come, first-served opportunity.
- Sponsorship includes the partner level benefits and your company logo on the convention bag.



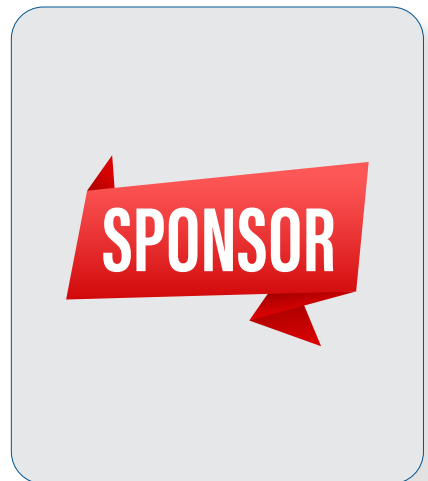
LANYARDS FOR CONVENTION ATTENDEES | SUPPORTER LEVEL | \$1,500 SOLD

- Your company logo will be placed on all attendee badges. This is a first-come, first-served opportunity. As the exclusive lanyard sponsor, your company will be responsible for providing the logo for placement on the attendee lanyard. Sizing and email instructions will be provided with your signup confirmation.
- Sponsorship includes supporter level benefits and company logo on the lanyards.



PREMIERE EVENT SPONSOR | ADVOCATE LEVEL | \$5000 (1 AVAILABLE)

- Be the company that is recognized by all in our largest ballroom. Attendees will see your company's logo as our Premiere Event Sponsor at our Opening Session, the Diversity, Equity, and Inclusion Session, the Ethics Session, the Supervision Session, the Legacy Chat, the Membership meeting, and "The NBALH Experience" Awards Gala. This sponsorship will assist in covering the cost of the audiovisual equipment for the breakout room.
- Sponsorship includes the advocate level benefits and a premiere location for your organization in the Exhibit Area.



CONVENTION TRACK SPONSOR | ADVOCATE LEVEL | \$4,000 (6 AVAILABLE) 5 REMAINING

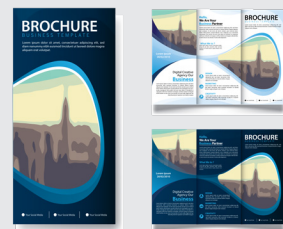
- What better way to get your name out there than to have attendees gazing at it all day as they listen to their educational sessions? Your company will receive one of the highest levels of recognition as a conference audio-visual sponsor. This sponsorship will assist in covering the cost of the audiovisual equipment for the breakout room. Your company will choose from the six following tracks: a) Audiology & Aural Rehabilitation, b) Clinical & School-Based Disorders, c) Language, d) Literacy, & Cultural/Linguistic Diversity, e) Leadership & Professional Development, and f) Medical-Based Disorders.
- Sponsorship includes the advocate level benefits and your company logo will be displayed outside of the breakout room and the moderator of the session will announce your company's name at each session all three days of the presentations.



SPONSOR

ATTENDEE BAG INSERT | FRIEND LEVEL | \$500.00 (UNLIMITED SPONSORSHIP)

- Ensure maximum visibility of your product or services by inserting a marketing item in every attendee's convention bag or folder.
- Insert a piece of product literature, product, or giveaway item into conference attendee bags. Shipping instructions will be provided in February 2024.
- Bags are given to all registered NBASLH Convention attendees. Great for announcing a promotion, giveaway, or contest at your booth.
- Sponsorship includes the friend level benefits.



SUMMARY OF SPONSORSHIP OPPORTUNITIES

Sponsorship Levels	Sponsorship Opportunities (Available Slots)
Advocate	<ul style="list-style-type: none"> • Student/Mentor Luncheon Sponsor (1) • Break Refreshments Sponsor (3) • Premiere Event Sponsor (1) • Convention Track Sponsor (6)
Partner	<ul style="list-style-type: none"> • Awards Gala Sponsor (4) • Opening Session Sponsor (2) • Opening Reception Sponsor (4) • Poster Session (1) • Closing Reception Sponsor (4) • Break Refreshments Sponsor (6) • Dancing and Desserts Sponsor • Conference Bags (2)
Supporter	<ul style="list-style-type: none"> • Lanyards for Convention Attendees (1)
Friend	<ul style="list-style-type: none"> • Attendee Bag Insert (Unlimited) • Program Booklet Advertising (Unlimited)



Exclusive Sponsors

Would you like your company's logo to be the *Exclusive Sponsor* for opportunities that have multiple slots available? Well, your wish is our command. *Exclusive Sponsorship* is available by simply multiplying the total number of available slots by the sponsorship fee. *Exclusive Sponsors* must purchase all available slots. If you want to be an *Exclusive Sponsor*, secure your slots today!

PROGRAM BOOKLET ADVERTISING

More than 500 attendees will receive the program booklet upon check-in and use it throughout the convention as their official guide! Advertisers receive friend level benefits for their support.

All advertising must be received print-ready. The costs below include color ads. Email advertising copy to partnerships@nbaslh.org in high-resolution .jpg, .eps, or .pdf file format. To ensure inclusion in the on-site convention program, all files must be received in the supported format on or before **Wednesday, January 31, 2024.**

NO LONGER AVAILABLE

**Inside Front Cover Program Book
Advertisement x \$350.00**



**Full Page Program Book
Advertisement x \$275.00**



**Half-Page Program Book
Advertisement x \$175.00**



**Quarter Page Program Book
Advertisement x \$75.00**



**Business Card Program Book
Advertisement x \$50.00**



SCHOLARSHIPS

If you are interested in offering a scholarship, please contact Lauren Hastings, Partnerships chair at partnerships@nbaslh.org. Please provide the following:

1. The amount of the scholarship
2. The target population (students or professionals; SLPs or AuDs)
3. The requirements for submission
4. Who will review the submissions? (NBASLH Awards committee or the company providing the scholarship)
5. Submit your money via the DONATE button
6. Sponsorship level recognition is based on the scholarship donation

If you have any questions regarding being an exhibitor or sponsor for the 2024 NBASLH Convention, please contact the NBASLH Office at NBASLH@nbaslh.org.





NATIONAL BLACK ASSOCIATION SPEECH-LANGUAGE AND HEARING

C O N V E N T I O N 2 0 2 4

SHERATON RALEIGH HOTEL

APRIL 11-13, 2024